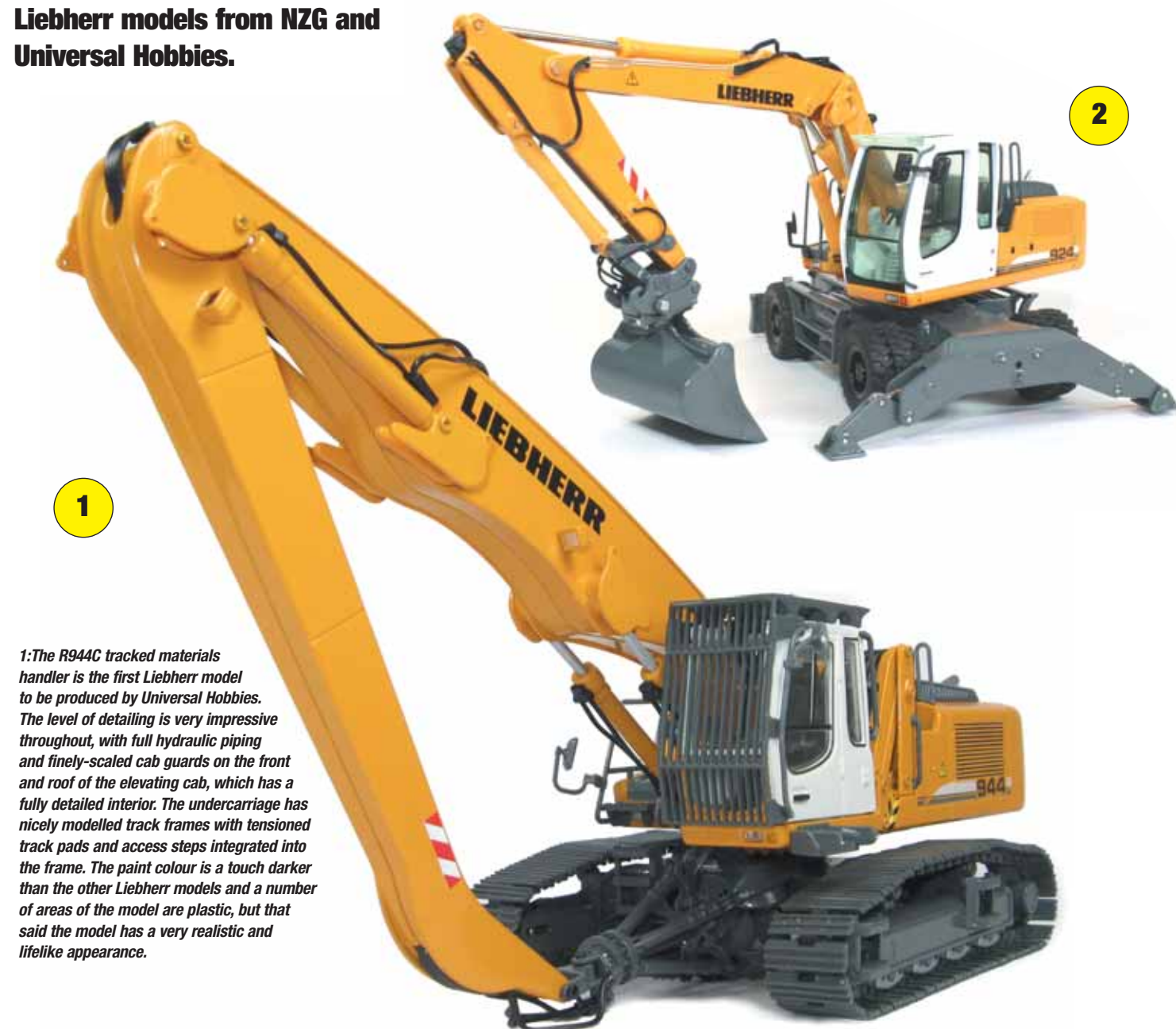


Latest Liebherrs looking good

This month, Steven Downes reviews some of the latest 1:50th-scale Liebherr models from NZG and Universal Hobbies.



1: The R944C tracked materials handler is the first Liebherr model to be produced by Universal Hobbies. The level of detailing is very impressive throughout, with full hydraulic piping and finely-scaled cab guards on the front and roof of the elevating cab, which has a fully detailed interior. The undercarriage has nicely modelled track frames with tensioned track pads and access steps integrated into the frame. The paint colour is a touch darker than the other Liebherr models and a number of areas of the model are plastic, but that said the model has a very realistic and lifelike appearance.

2

2: The undercarriage of the A924C features a functional blade and outriggers with pivoting pads, along with a steering front axle and double tyres on each wheel hub. The hydraulically adjustable two-piece boom and stick have flexible and silver highlighted fixed piping with an accurately replicated Likufix quick coupler and tilting grading bucket rounding out another great release from NZG.

3: The new generation Liebherr R916 tracked excavator has a brand new look with updated cab design and the option of an advanced control system. The new model from NZG captures every aspect of the full-size machine, from the linked metal tracks on the undercarriage to the very nicely engineered and replicated body shape. The cab interior is visible and mirrors and safety grab rails are fitted to the cab frame while the boom has realistic movement plus a quick coupler and general-purpose digging bucket mounted on the stick.

4: The L510 wheel loader is another updated model from the original, featuring the new marking scheme with the Liebherr branding on the loader arms and grey painted rear counterweight. Flexible piping has been added to the hydraulics and the cab doors can be opened to reveal the detailed interior, which is a nice addition from NZG.

5: The A900C-ZW road/rail excavator from NZG is an update of the original release, featuring a new rear body casting and updated markings on the body and boom. The model is supplied with a section of track and both tilting grading bucket and clamshell grab attachments. The detail is excellent throughout, including functional outriggers, steering and offset boom along with a fully replicated extended two-man cab and accurate German rail services colour scheme.

6: The PR764 hydrostatic dozer is the flagship model in the Liebherr range and the replica by NZG captures all the detail right down to the fully replicated pivoting bogie wheels fitted to the track frames, along with great detailing of the drive sprockets and linked track pads. The semi-U blade can be raised, lowered and tilted, as can the single-shank ripper at the rear, and the hydraulic cylinders have fitted flexible hoses. The cab interior has been reproduced with grab rails and work lights integrated into the cab frame along with panel detailing cast into the body. The paint finish is excellent, with printed grilles and markings all adding to the realistic appearance.

Liebherr Great Britain has a new model promotion in the pipeline for the three weeks running up to Christmas. Contact Liebherr from 1 to 21 December to purchase all Liebherr models in the 2009 Liebherr shop catalogue at a 15% discount (for further information, e-mail Models.LGB@Liebherr.com).



6



3



4



5

