

Small Plant & Machinery



Steven Downes reports from the world's largest toy and model show about highlights due for release later this year.

NUREMBERG TOY FAIR

CONRAD

The highlight on the Conrad stand was the new Liebherr T264 mining truck which packs a lot of excellent detailing, from the front wheels with intricate disc brakes, steering front axle with functional suspension, a tipping rear body and replicated engine block at the heart of the chassis to the metal safety railings and access steps.

For crane fans, the Liebherr LTC1045-3.1 has been produced in the Saller company colours and the LTR1100 appears in the Hofmann company decoration, while the Terex AC1000 mobile crane is being produced in the Integrated Lifting colours with matching luffing jib.

The Terex Superlift 3800 crawler crane was first introduced as a prototype during Bauma in 2013 and tooling is underway for a 2014 release.

The Demag H135 shovel is a reproduction of an early model with a number of updates including new hydraulic cylinders, fixed hydraulic lines and linked metal tracks.

The Poclair TY45 with shovel configuration is a great addition to the Poclair Heritage Collection and rounds out the TY45 versions nicely.

A number of new truck models were on display including both Euro 5 and the



The Liebherr LTR1100 in Hofmann decoration.

updated Euro 6 MAN cabins with different bodies including tippers, skip trucks and tractor units with tipping trailers.

Mercedes-Benz four-axle trucks with Brechtel wrecker and sewer cleaning bodies were also displayed.



The Demag H135 has fixed hydraulic lines and linked metal tracks.



The Poclair TY45 is part of the Heritage Collection.

TONKIN

Last year was a busy time for Tonkin Replicas with a number of new developments coming through. With the Caterpillar 988K and 950K wheel loaders, we have already been treated to the new range of models packed with good detailing at an affordable price.

With more new models already produced and on the water, the range will soon be expanded to include the 966K and 972K wheel loaders in both 1:50 and 1:87 scales along with the massive 994H wheel loader, the D6R bulldozer and the 775G quarry truck.

The new announcement in the Caterpillar line during the Toy Fair was the MT4400AC mining truck while more new items will be announced during ConExpo.

The addition of a new Kobelco crane licence saw the launch of the 2250 tracked lattice boom crawler which should be available from April onwards while another new licensee is Nootboom with several new trailers under development.



The Cat 775G.



The Cat 966K.

MOTORART

Last year was hit and miss for Motorart which produced some very good models, while some lacked the finer details expected of this premium manufacturer.

The new samples displayed during the fair highlighted a new approach to the entire release process which should ensure consistency from one release to the next with many new models planned for launch within months.

Most notable additions to the Volvo line are the L150G and L180G wheel loaders which are highly-detailed with opening engine covers, side-tilting cabins, different bucket designs and metal handrails throughout.

The new A40G articulated hauler highlights advances in model production with excellent grill replication on the opening bonnet and again, all metal handrails and good attention to fine detailing.

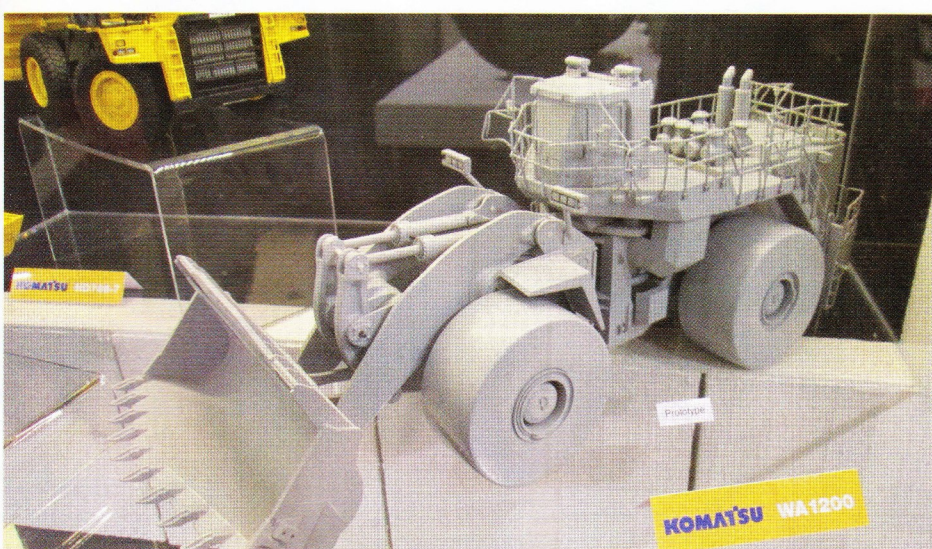
Paver fans are treated to the new 6820C tracked paver that offers more excellent detailing while fans of historic models will be happy to see the original Volvo BM H10 wheel loader appear in 1:50 scale.

The New Holland range includes the new F156.7 motor grader, WE 170B Pro wheeled excavator and D180C bulldozer, the latter two also appearing in Case decoration which are joined by the new Case 1121F wheel loader.

JCB fans are treated to two updated models sporting the latest decoration in the 456ZX wheel loader and the Vibromax VM115 while the top of the range JCB loadall is also in development.

Other items from Motorart include the K-Tec 1233 scraper with Volvo ADT, a new Yanmar model in 1:32 scale, the MST 644 loader-backhoe and an updated Kalmar reachstacker container handler.

Several additional Volvo models will be unveiled during the ConExpo show and these are already produced and should be available in late March.



NZG The Komatsu HD785 quarry truck.

NZG introduced a new licensee during the Toy Fair with two new models of JCB equipment. After a number of years waiting, the JCB range will finally have a 1:50 scale model of a loadall, the 535-140 which is accompanied by the 86C-1 midi-excavator.

For Atlas Weycor, a model of their AR75T telescopic boom loader is in development with an updated version of the 300 tandem drum compactor.

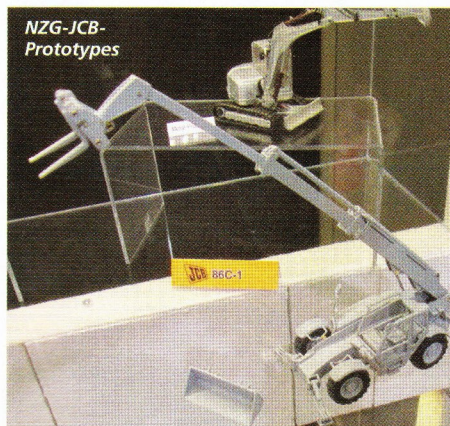
Five new Terex models are expected during 2014 including the TLB840 backhoe with outer extending dipper and the TLB890 with inside extending dipper.

Both models feature functional steering, a detailed cabin interior, fully working front loader and side-shift kingpin.

Joining them is the TL120 wheel loader and two midi size excavators, the tracked TC125 and the wheeled TW110 which share the same body and cab design with the tracked machine having a mono boom and the wheeled machine featuring a hydraulically adjustable boom.

The three new Komatsu models are a welcome surprise with the WA380 wheel loader and HD785 off-road quarry truck dwarfed by the flagship WA1200 mining wheel loader, which shows immense promise ahead of its release later this year.

While not on display on the NZG booth, Liebherr was represented with the launch of the R9400 hydraulic excavator which is a totally new casting that will be available in both front shovel and backhoe versions by mid-year.



The Terex TC125 prototype.

A new range of Mercedes-Benz Arocs trucks is planned for release during 2014 with the distinctive front grill authentically modelled. The four-axle chassis will appear with several different body options including half-pipe and Meiller tippers while a concrete mixer body version is also planned. For the first time, NZG will be able to offer right-hand drive versions of the trucks opening the possibility for UK-decorated models to be realised.

WSI

Last year was challenging for WSI Models with a number of internal issues resulting in the announcement of a merger between WSI and the Chinese manufacturer, Wan-Ho.

The most striking of the new announcements are a pair of Liebherr excavator models, the largest of which is the R970 configured for mass excavation duties while the small R914 compact shows excellent promise. Both are expected to be released towards the end of 2014.



The Liebherr R914 compact excavator.