

# New name, different approach

WSI Collectibles are well known for their highly detailed truck replicas. Steven Downes takes a look at their first foray into the construction model market in the form of the 1:50-scale Hitachi ZX870-3 tracked excavator.

1: The Hitachi ZX870-3 is available in three slightly different versions, based on attachments, and each version is limited to only 1000 pieces.

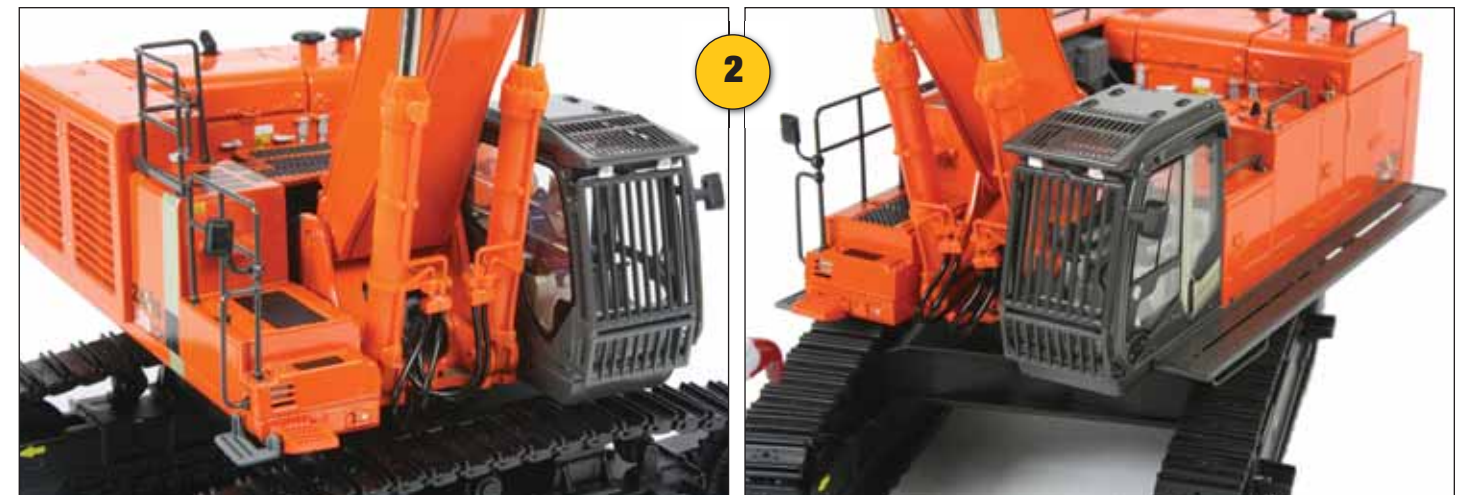


The new WSI scale model is exceptionally detailed throughout, including some very good touches that are sadly missing on models from other manufacturers. Out of the box, the attention to detail is evident from a fully replicated cab interior sporting the blue coloured seat with Hitachi logo, while all the hand and foot controls are visible, as are the contoured fascias and system display console.

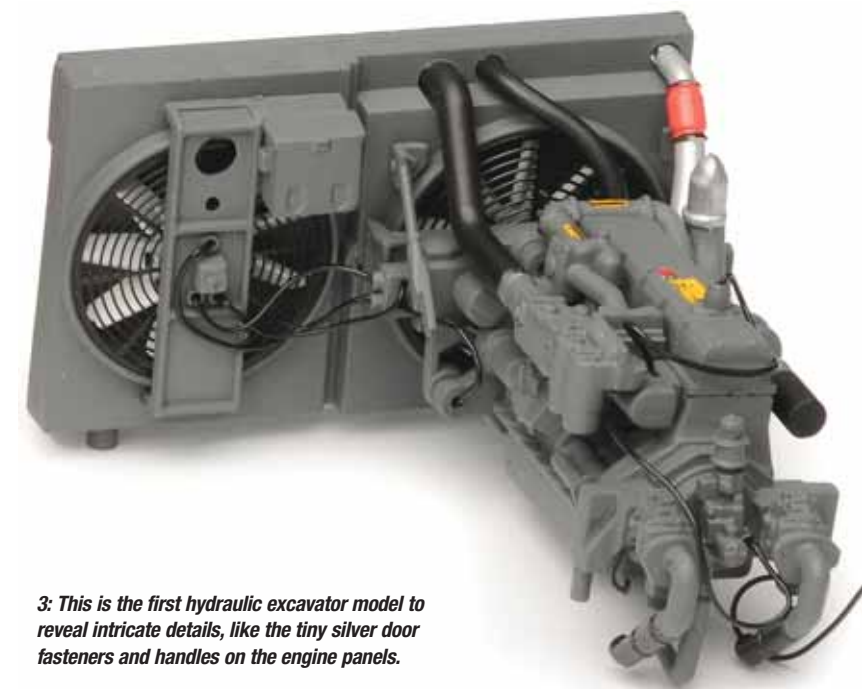
One of the most striking areas of the model is the fully replicated engine, complete with the cooling assembly, which has all the fan blades and intricate safety grilles fitted. While this is hidden within the engine bay, side- and top-opening doors allow a good view, while the rear counterweight block can be removed from the model, revealing the internal structure.

The main body castings have been executed well, featuring amazing crispness on the engine grilles that reveal the radiator assembly within. The paint finish is exceptional, with some very nice touches, including the printed bolt detailing on all the safety railings for total realism. The fixed and flexible hydraulic pipework is raised from the back of the boom, which is another nice touch and gives a more realistic appearance.

Three versions of the model have been released: one with digging bucket, one with Demarc dedicated shears and one with a Demarc multi-processor. More evidence of the attention to detail is evident on the multi-processor where the jaws can be realistically disconnected from the body, a feature of the full-size attachment. Also, all versions feature bolt fixings, allowing the attachments to be easily removed.



2: The cab interior features a wealth of detail; the exterior has a photo-etched walkway fitted along the side of the upper-structure.



3: This is the first hydraulic excavator model to reveal intricate details, like the tiny silver door fasteners and handles on the engine panels.



4: The individually linked metal tracks have crisply detailed pads that are tensioned and rotate freely on the realistic track frames.